

What is Post-Employment Services?

POST-EMPLOYMENT SERVICES ARE A ONE TIME SERVICE PROVIDED TO HELP A PARTICIPANT KEEP THEIR JOB, GET HIRED BACK, OR ADVANCE IN THEIR EMPLOYMENT AFTER AN IPE HAS BEEN COMPLETED AND THE CASE IS CLOSED SUCCESSFULLY. MUST BE UTILIZED WITHIN ONE YEAR OF CLOSURE.

POST-EMPLOYMENT SERVICES IS THE LAST STEP IN THE VR PROCESS.

VR PROCESS

1. APPLICATION

5. SERVICES

2. INTAKE

6. EMPLOYMENT

3. ELIGIBILITY

7. SUCCESSFUL CLOSURE

4. INDIVIDUALIZED PLAN FOR EMPLOYMENT

8. POST-EMPLOYMENT SERVICES

CONTACT US

Prairie Band Potawatomi Nation
Vocational Rehabilitation



11400 158th Road
Mayetta, Kansas 66509



(785) 966-8331



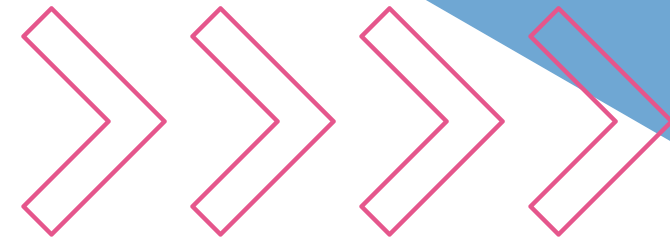
(785) 966-8388



vocrehab@pbpnation.org



<https://www.pbpindiantribe.com/social-services/vocational-rehabilitation/>



Prairie Band
Potawatomi
Nation
Vocational
Rehabilitation

POST-EMPLOYMENT SERVICES

THE GOAL OF POST-EMPLOYMENT SERVICES

The goal of post-employment services is to provide services after the achievement of an employment outcome that are required for a participant to maintain, regain or advance in employment. Must be consistent with the participant's:

- strengths
- resources
- priorities
- concerns
- abilities
- capabilities
- interests
- informed choice.

Post-employment services are used to address unexpected situations or problems that have arisen placing participant's employment in jeopardy.



What Can You Do if You Disagree with a Decision?

FIRST, TALK TO YOUR PBPN TRIBAL VOCATIONAL REHABILITATION COUNSELOR.

IF YOU STILL HAVE CONCERNS WITH A DECISION, TALK TO THE PBPN TRIBAL VOCATIONAL REHABILITATION MANAGER.

LAST, IF YOU STILL HAVE CONCERNS, CONTACT THE CLIENT ASSISTANCE PROGRAM.

Disability Rights Center of Kansas
c/o Client Assistance Program
2114 SW 6th Street
Topeka, Kansas 66603
(785) 266-8193
Toll Free 1-800-432-2326



EXAMPLES OF CIRCUMSTANCES UNDER WHICH POST-EMPLOYMENT SERVICES MAY BE APPROPRIATE



A. To maintain competitive integrated employment (e.g. the individual has conflicts with coworkers and requires mental health services to retain their job).

B. To regain competitive integrated employment (e.g. the individual's job is eliminated and new placement services are needed).

C. To advance in competitive integrated employment (e.g. the employment is no longer consistent with the individual's strengths, resources, priorities, concerns, abilities, capabilities, and interests).